

## A Survey of fish species kept at the Brno Zoo (part 1)

The following list shows all fish species and subspecies kept at the Brno Zoo since its foundation in 1953 to 2004. The traditional class of Fishes, in the way that it was originally considered, doesn't actually exist any longer. The present systematics knows, apart from the class Cartilaginous fishes (Chondrichthyes – rays, sharks, chimaeras), at least two more separate classes: Lobe-finned fishes (Sarcopterygii – coelacanths and lungfishes) and Ray-finned fishes (Actinopterygii – sterlets and the actual fishes). In this list we follow the classification of Hanel, L. (1998, 2000) and Hanel, L. & Novák, J. (2000, 2001, 2002). This survey concludes the cycle of identically conceived lists of amphibians, reptiles, birds and mammals, that were published in Zooreport in 2002 and 2003.

Photo: Eduard Stuchlík



Clown Knifefish (*Chitala chitala*)

Photo: Michal Piškula



Tiger Moray Eel (*Uropterygius tigrinus*)

### A survey of fish species and subspecies kept at the Brno Zoo since its opening in 1953 to 2004

<b>Superclass:</b> Gnathostomata/Jawed Vertebrates
<b>CLASS:</b> CHONDRICHTHYES/CARTILAGINOUS FISH
<b>SUBCLASS:</b> ELASMOBRANCHII
<b>Order:</b> Sharks
<b>Family:</b> Scyliorhinidae/Cat Sharks
1. <i>Atelomycterus macleayi</i> Marbled Cat Shark
<b>Family:</b> Triakidae/Houndsharks
1. <i>Mustelus henlei</i> Brown Smoothhound
<b>Order:</b> Rajiformes/Skates
<b>Family:</b> Dasyatidae/Stingrays
1. <i>Potamotrygon laticeps</i> Laticeps Stingray
2. <i>Potamotrygon motoro</i> Orange Spotted Stingray
<b>CLASS:</b> ACTINOPTERYGII/RAY-FINNED FISHES
<b>SUBCLASS:</b> CHONDROSTEI
<b>Order:</b> Acipenseriformes
<b>Family:</b> Acipenseridae/Sturgeons
1. <i>Acipenser ruthenus</i> Sterlet

<b>SUBCLASS:</b> NEOPTERYGII
<b>Order:</b> Osteoglossiformes/Bony-tonguesfishes
<b>Family:</b> Osteoglossidae/Arowanas
1. <i>Scleropages jardini</i> Australian Arowana
<b>Family:</b> Pantodontidae/Butterflyfishes
1. <i>Pantodon buchholzi</i> African Butterfly Fish
<b>Family:</b> Notopteridae/Featherbacks (Knifefishes)
1. <i>Chitala chitala</i> Clown Knifefish
2. <i>Xenomystus nigri</i> African Knifefish
<b>Family:</b> Mormyridae/Elephantfishes
1. <i>Gnathonemus petersi</i> Elephantnose Fish
2. <i>Petrocephalus bovei</i> Baby Whale
<b>Order:</b> Anguilliformes/Eels (Apodes)
<b>Family:</b> Muraenidae/Moray Eels
1. <i>Gymnothorax tile</i> Snow Flake Eel
2. <i>Muraena helena</i> Mediterranean Moray
3. <i>Uropterygius tigrinus</i> Tiger Moray Eel

## A survey of fish species and subspecies kept at the Brno Zoo since it's opening in 1953 to 2004

<b>Order:</b>	<i>Cypriniformes/Carp-likefishes</i>	
<b>Family:</b>	<i>Cyprinidae/Minnows or Carps</i>	
1.	<i>Balantiocheilus melanopterus</i>	Bala Shark
2.	<i>Barbodes schwanenfeldi</i>	Tinfoil Barb
3.	<i>Barbus ablabes</i>	Ablabes Barb
4.	<i>Barbus niokoloensis</i>	
5.	<i>Barbus</i> sp. "Odessa"	Odessa Barb
6.	<i>Boraras maculata</i>	Dwarf Rasbora



Photo: Michal Piškula

*Brown Smoothhound (Mustelus henlei)*

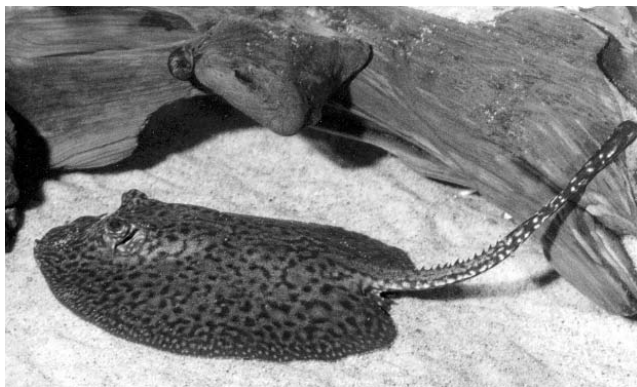


Photo: Michal Piškula

*Lattice Stingray (Potamotrygon laticeps)*

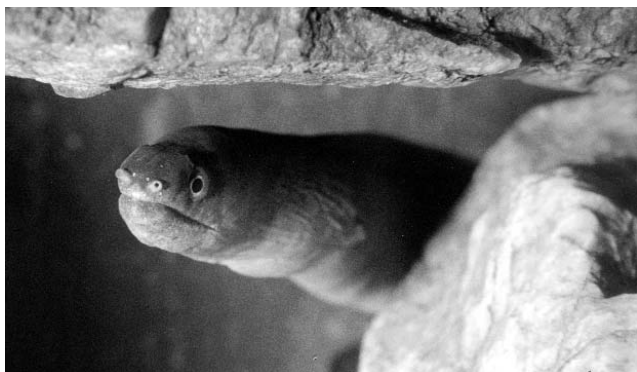


Photo: Michal Piškula

*Snow Flake Eel (Gymnothorax tile)*

7.	<i>Capoeta schuberti</i>	Gold Barb
8.	<i>Carassius auratus auratus</i>	Goldfish
9.	<i>Carassius carassius</i>	Crucian Carp
10.	<i>Crossocheilus siamensis</i>	Siamese Algae Eater
11.	<i>Cyprinus carpio</i>	Common Carp
12.	<i>Cyprinus carpio</i> f. koi	Koi Carp

13.	<i>Danio albolineatus</i>	Pearl Danio
14.	<i>Danio frankei</i>	Leopard danio
15.	<i>Danio kerri</i>	Blue Danio
16.	<i>Danio malabaricus</i>	Giant Danio
17.	<i>Danio rerio</i>	Zebra Danio
18.	<i>Epalzeorhynchus bicolor</i>	Redtail Blackshark
19.	<i>Epalzeorhynchus frenatum</i>	Red Finned Shark
20.	<i>Gobio gobio</i>	Gudgeon
21.	<i>Labeo forskali</i>	Forskål's Labeo
22.	<i>Leptobarbus hoeveni</i>	Hoeven's Slender Carp
23.	<i>Puntius aurulus</i>	Aurulus Barb
24.	<i>Puntius conchoni</i>	Rosy Barb
25.	<i>Puntius fasciatus</i>	Banded Barb
26.	<i>Puntius filamentosus</i>	Filament Barb
27.	<i>Puntius lineatus</i>	Lined Barb
28.	<i>Puntius nigrofasciatus</i>	Black Ruby Barb
29.	<i>Puntius oligolepis</i>	Checkered Barb
30.	<i>Puntius pentazona johorensis</i>	Five Striped Barb
31.	<i>Puntius semifasciolatus</i>	Golden Barb
32.	<i>Puntius semifasciolatus schuberti</i>	Schuberts Barb
33.	<i>Puntius tetrazona</i>	Tiger Barb
34.	<i>Puntius tetrazona hybrid</i>	Albino Tiger Barb
35.	<i>Puntius ticto stoliczkae</i>	Ticto Barb
36.	<i>Puntius titteya</i>	Cherry Barb
37.	<i>Rasbora agyrotaenia</i>	Harlequin Rasbora
38.	<i>Rasbora daniconius</i>	Slender Rasbora
39.	<i>Rasbora espei</i>	Espes Rasbora
40.	<i>Rasbora trilineata</i>	Scissor-Tail Rasbora
41.	<i>Rhodeus sericeus amarus</i>	Bitterling
42.	<i>Tanichthys albonubes</i>	White Cloud Mountain Minnow
43.	<i>Tinca tinca</i>	Tench
44.	<i>Trigonostigma heteromorpha</i>	Harlequin Rasbora

**Family:** *Gyrinocheilidae/Suckerbelly Loaches*

1.	<i>Gyrinocheilus aymonieri</i>	Lemon Algae Eater
----	--------------------------------	-------------------

**Family:** *Cobitidae/Loaches*

1.	<i>Botia berdmorei</i>	Blyth's Loach
2.	<i>Botia hymenophysa</i>	Green Tiger Loach
3.	<i>Botia lohachata</i>	Pakistani Loach
4.	<i>Botia macracantha</i>	Claun Loach
5.	<i>Botia striata</i>	Zebra Loach
6.	<i>Pangio kuhlii</i>	Kuhli (Coolie) Loach
7.	<i>Pangio kuhlii sumatranus</i>	Sumatra Loach
8.	<i>Yasuhikotakia lecontei</i>	Silver Loach
9.	<i>Yasuhikotakia morleti</i>	Skunk Loach
10.	<i>Yasuhikotakia sidhimunki</i>	Dwarf Loach

**Order:** *Characiformes/Tetrafishes and relatives*

**Family:** *Citharinidae/Moonfishes (Citharins)*

1.	<i>Nannaethiops tritaeniatus</i>	Threeline Tetra
----	----------------------------------	-----------------

## A survey of fish species and subspecies kept at the Brno Zoo since it's opening in 1953 to 2004

<b>Family: Hemiodontidae/Hemiodontids</b>	
1. Hemiodopsis goeldii	Goeld's Hemiodus
2. Hemiodopsis sterni	Stern's Hemiodus
3. Nannobrycon eques	Three-striped Pencilfish
4. Poecilobrycon harrisoni	Harrison's Pencilfish
5. Poecilobrycon unifasciatus ocell.	One-lined Pencilfish
<b>Family: Curimatidae</b>	
1. Chilodus punctatus	Spotted Headstander
<b>Family: Anostomidae/Headstanders</b>	
1. Anostomus anostomus	Striped Anostomus
2. Leporinus affinis	Many-Banded Leporinus
<b>Family: Lebiasinidae/Pencilfishes</b>	
1. Nannostomus beckfordi	Golden Pencilfish
2. Nannostomus trifasciatus	Three-Lined Pencilfish
3. Nannostomus marginatus	Dwarf Pencilfish
<b>Family: Gasteropelecidae/Flying Characins</b>	
1. Carnegiella strigata	Marbled Hatchetfish
2. Gasteropelecus sternicla	Common Hatchetfish
<b>Family: Characidae/Characins (Tetras)</b>	
1. Anoptichthys jordani	Blind Cave Characin
2. Aphyocharax rubripinnis	Bloodfin Tetra
3. Astyanax fasciatus	Banded Astyanax
4. Brycinus longipinnis	Longfin Tetra
5. Bryconops melanurus	Tail-Light Tetra
6. Copella arnoldi	Spraying Characin
7. Corynopoma riisei	Swordtail Characin
8. Ctenobrycon spilurus	Silver Tetra
9. Elachocharax georgiae	Dwarf Darter Tetra
10. Gymnocorymbus ternetzi	Black Tetra
11. Hemigrammus caudovittatus	Buenos Aires Tetra
12. Hemigrammus erythrozonus	Glowlight Tetra
13. Hemigrammus hyanuary	January Tatra
14. Hemigrammus marginatus	Bassam Tetra
15. Hemigrammus nana	Silver-Tipped Tetra
16. Hemigrammus ocellifer	Head-and-tailight Tetra
17. Hemigrammus pulcher	Pretty Tetra
18. Hemigrammus rhodostomus	Rummy-Nose Tetra
19. Hemigrammus ulreyi	Ulrey's Tetra
20. Hyphessobrycon callistus	Serpae Tetra
21. Hyphessobrycon copelandi	Copeland's Tetra
22. Hyphessobrycon erythrostigma	Bleeding Heart Tetra
23. Hyphessobrycon flammeus	Flame Tetra
24. Hyphessobrycon griemi	Griem's Tetra
25. Hyphessobrycon herbertaxelrodi	Black Neon Tetra
26. Hyphessobrycon heterorhabdus	Belgian Flag Tetra
27. Hyphessobrycon ornatus	Flag Tetra
28. Hyphessobrycon pulchripinnis	Lemon Tetra
29. Hyphessobrycon serpae	Serpae Tetra

30. Hyphessobrycon scholzei	Blackline Tetra
31. Inpaichthys kerri	Blue Emperor Tetra
32. Megalamphodus megalopterus	Black Phantom Tetra
33. Megalamphodus sweglesi	Red Phantom Tetra
34. Metynnis hypsauchen	Silver Dollar
35. Microbrycon cochui	Cochu's Blue Tetra
36. Moenkhausia oligolepis	Glass Tetra
37. Moenkhausia pittieri	Diamond Tetra
38. Moenkhausia sanctafilomenae	Red-eye Tetra
39. Nematobrycon palmeri	Emperor Tetra
40. Paracheirodon axelrodi	Cardinal Tetra
41. Paracheirodon innesi	Neon Tetra
42. Phenacogrammus interruptus	Congo Tetra



Photo: Michal Piškula

*Harlequin Rasbora (Trigonostigma heteromorpha)*

43. Prionobrama filigera	Glass Bloodfin
44. Pristella maxillaris	Pristella Tetra
45. Pygocentrus nattereri	Red Piranha
46. Pyrrhulina vittata	Striped Pyrrhulina
47. Serrasalmus gibbus	Silver-Scaled Piranha
48. Serrasalmus rhombeus	Spotted Piranha
49. Serrasalmus spilopleura	Black-banded Piranha
50. Thayeria boehlkei	Penguin Tetra

### **Order: Siluriformes/Catfishes**

#### **Family: Ictaluridae**

1. Ictalurus nebulosus	Brown Bullhead
------------------------	----------------

#### **Family: Bagridae/Bagrid Catfishes**

1. Leiocassius brashnikowi	Braznikov's Catfish
2. Leiocassius poecilopterus	Bumble Bee Catfish
3. Mystus tengara	Bagrid Catfish

#### **Family: Siluridae/Sheafishes**

1. Kryptopterus bicirrhis	Glass Catfish
2. Silurus glanis	Wels Catfish

#### **Family: Schilbeidae/Schilbeid Catfishes**

1. Schilbe mystus	African Butter Catfish
-------------------	------------------------



## A survey of fish species and subspecies kept at the Brno Zoo since it's opening in 1953 to 2004

### Family: *Pangasiidae/Shark Catfishes*

- |                                  |                   |
|----------------------------------|-------------------|
| 1. <i>Pangasius sanitwongsei</i> | Giant Pangasius   |
| 2. <i>Pangasius sutchi</i>       | Irridescent Shark |

### Family: *Clariidae/Clarid Catfishes*

- |                              |                         |
|------------------------------|-------------------------|
| 1. <i>Clarias angolensis</i> | Angolan Walking Catfish |
| 2. <i>Clarias batrachus</i>  | Walking Catfish         |

### Family: *Heteropneustidae/Airsac Catfishes*

- |                                   |                        |
|-----------------------------------|------------------------|
| 1. <i>Heteropneustes fossilis</i> | Asian Stinging Catfish |
|-----------------------------------|------------------------|



Photo: Michal Piškula

Striped Anostomus (*Anostomus anostomus*)



Photo: Michal Piškula

Madagascar Rainbowfish (*Bedotia geayi*)



Photo: Michal Piškula

Walking Catfish (*Clarias batrachus*)

### Family: *Mochokidae/Synodontis Cats*

- |                                   |                     |
|-----------------------------------|---------------------|
| 1. <i>Synodontis eupterus</i>     | Featherfin Squeaker |
| 2. <i>Synodontis nigriventris</i> | Upside-Down Catfish |
| 3. <i>Synodontis schalli</i>      | Wahrindi            |

### Family: *Doradidae/Doradid Catfishes*

- |                                     |                           |
|-------------------------------------|---------------------------|
| 1. <i>Acanthodoras cataphractus</i> | Chocolate Talking Catfish |
|-------------------------------------|---------------------------|

- |                               |                 |
|-------------------------------|-----------------|
| 2. <i>Amblydoras hancocki</i> | Talking Catfish |
|-------------------------------|-----------------|

### Family: *Pimelodidae/Pimelodid Catfishes*

- |                             |                   |
|-----------------------------|-------------------|
| 1. <i>Pimelodus clarias</i> | Banded Pimelodid  |
| 2. <i>Pimelodus ornatus</i> | Ornate Pimelodus  |
| 3. <i>Pimelodus pictus</i>  | Spotted Pimelodus |

### Family: *Callichthyidae/Armoured Catfishes*

- |  |                  |
|--|------------------|
| 1. <i>Brochis coeruleus</i>            | Common Brochis   |
| 2. <i>Corydoras aeneus</i>             | Albino Cory      |
| 3. <i>Corydoras bondi copenamensis</i> | Blackstripe Cory |
| 4. <i>Corydoras julii</i>              | Leopard Cory     |
| 5. <i>Corydoras melanistus</i>         | Masked Cory      |
| 6. <i>Corydoras myersi</i>             | Myer's Cory      |
| 7. <i>Corydoras paleatus</i>           | Peppered Cory    |
| 8. <i>Corydoras pygmaeus</i>           | Pygmy Cory       |
| 9. <i>Corydoras rabauti</i>            | Rabaut_s Cory    |
| 10. <i>Corydoras schultzei</i>         | Bronze Cory      |
| 11. <i>Corydoras schwarzi</i>          | Schwartz_s Cory  |
| 12. <i>Hoplosternum thoracatum</i>     | Hoplo Catfish    |

### Family: *Loricariidae/Mailed Catfishes*

- |  |                        |
|--|------------------------|
| 1. <i>Ancistrus multispinis</i>          | Bristlemouth Catfish   |
| 2. <i>Loricaria filamentosa</i>          | Upper-whiptail Catfish |
| 3. <i>Loricaria parva</i>                | Whiptail Loricaria     |
| 4. <i>Plecostomus punctatus</i>          | Spotted Hypostomus     |
| 5. <i>Plegostoma gibiceps</i>            | Sailfin Pleco          |
| 6. <i>Pterigoplychthys multiradiatus</i> | Sailfish Catfish       |

### Order: *Esociformes/Pike-likefishes*

#### Family: *Esocidae/Pikes*

- |                       |               |
|-----------------------|---------------|
| 1. <i>Esox lucius</i> | Northern Pike |
|-----------------------|---------------|

### Order: *Atheriniformes/Silversides*

#### Family: *Bedotiidae/Madagassian Rainbowfishes*

- |                         |                        |
|-------------------------|------------------------|
| 1. <i>Bedotia geayi</i> | Madagascar Rainbowfish |
|-------------------------|------------------------|

#### Family: *Melanotaeniidae/Rainbowfishes*

- |                                    |                          |
|------------------------------------|--------------------------|
| 1. <i>Glossolepis incisus</i>      | Red Rainbowfish          |
| 2. <i>Melanotaenia boesemani</i>   | Boesemann's Rainbowfish  |
| 3. <i>Melanotaenia lacustris</i>   | Lake Kutubu Rainbowfish  |
| 4. <i>Melanotaenia maccullochi</i> | Dwarf Rainbowfish        |
| 5. <i>Melanotaenia nigrans</i>     | Mauve Rainbowfish        |
| 6. <i>Melanotaenia praecox</i>     | Neon Rainbowfish         |
| 7. <i>Melanotaenia splendida</i>   | Red-Striped Rainbowfish  |
| 8. <i>Melanotaenia trifasciata</i> | Goyder River Rainbowfish |

#### Family: *Atherinidae/Silversides*

- |                                  |                     |
|----------------------------------|---------------------|
| 1. <i>Telmatherina ladigesii</i> | Celebes Rainbowfish |
|----------------------------------|---------------------|

### Order: *Beloniformes/Synentognaths*

#### Family: *Belonidae/Needlefishes*

- |                             |                   |
|-----------------------------|-------------------|
| 1. <i>Xenotodon cancila</i> | Silver Needlefish |
|-----------------------------|-------------------|

#### Family: *Hemirhamphidae/Halfbeaks*

- |                               |                    |
|-------------------------------|--------------------|
| 1. <i>Dermogenys pusillus</i> | Wrestling Halfbeak |
| 2. <i>Nomorhamphus liemii</i> | Celebes Halfbeak   |